

COLLEGE OF AGRICULTURAL, HUMAN, AND NATURAL RESOURCE SCIENCES

[HOME](#)[ABOUT](#)[ACADEMICS](#)[RESEARCH](#)[EXTENSION](#)[ALUMNI & FRIENDS](#)[FACULTY & STAFF RESOURCES](#)

Green Times – September 2015

Posted by cahnrs.webteam | September 2, 2015

Washington Organic Week is Sept 12–19! How will you celebrate?

Events

Cultivating Success Fall Courses

Agricultural Entrepreneurship

Jefferson and Clallam Counties: Chimacum, Oct – Dec. [Information](#). Mason County: Shelton and web option, Oct – Dec. Email: mary.dimatteo@wsu.edu
Snohomish County: Everett, Sep 22–Dec 8. [Register](#).

Sustainable Small Acreage Farming and Ranching

Kitsap County: Bremerton, dates TBD. [Information](#). Pierce County: Puyallup, Sep 17 – Dec 17. Email: bbodah@wsu.edu Skagit County: Burlington, Sep 24 – Dec 10. [Register](#). Whatcom County: Bellingham, Sep 24 – Oct 24. [Register](#).

NEW! Advancing Your Farm Plan – Managing Risk

Snohomish and Spokane Counties: Oct 1 – Nov 19. [Information](#).

[Cultivating Success website](#)

September Farm Walks

Presented by Tilth Producers and WSU's Small Farms Program.

Accessing Land as Beginning Vegetable Farmers

September 14, Quackenbush Farm, Clark County. [Register.](#)

Organic Apple Orchard and Cidery: Two Businesses in One

September 28, Sinclair Orchards & Ciderhouse, Okanogan County. [Register.](#)

Advanced Hardwood Biofuels Field Tours

September 15, Jefferson, OR. [Register.](#) October 21, Clarksburg, CA. [Register.](#)

Monitoring Rangeland Health: A Key to Increased Profit

September 30, Lazy R Ranch, Cheney, WA. [Register.](#)



'A quiet crisis': The rise of acidic soil in Washington

Gary Wegner first noticed the problem in 1991, when a field on his family's farm west of Spokane produced one-fourth the usual amount of wheat. Lab tests revealed a surprising result: the soil had become acidic.

Read the full story at Crosscut.com.

[Read More](#)

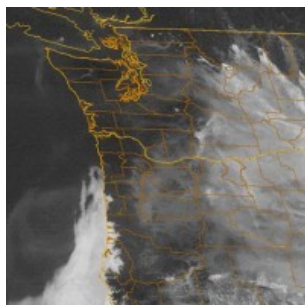


'A good straw year': Bales are in big demand in the Northwest

To bale or not to bale? That's a question farmers face every year about wheat straw, which can be seen

stacked in large quantities throughout Washington's wheat country as harvest season ends. A secondary crop for farmers whose prime concern is grain, Northwest straw is sought after by mushroom growers, livestock owners and, increasingly, for pulp.

[Read More](#)



Washington drought report: August 2015

When it comes to cider, Washington is out front with 30-plus cideries, more than any other state in the country. An interview with cider industry expert Alan Shapiro sheds light on this booming sector of the craft beverage industry. Warning: this [Crosscut.com story](#) may fuel your thirst for a cider adventure.

[Read More](#)



Leadership change at WSU Mount Vernon

Chad Kruger is the new director for the Washington State University Mount Vernon Northwestern Research and Extension Center (NWREC) as of Aug. 17. He will continue to lead the statewide WSU Center for Sustaining Agriculture and Natural Resources (CSANR), which has been based in Wenatchee, Wash.

[Read More](#)



WSU dining services certified for sustainability, nutrition

Washington State University Dining Services recently earned SPE certification in recognition of its nutritious and environmentally sustainable food program. SPE, from the Latin Sanitas Per Escam (Health Through

Food), is a third-party certification that uses science-based criteria to recognize food service operators' commitment to serving nutritious and sustainable food and promoting customer well-being.

[Read More](#)



WSU international beer gathering and cider symposium Sept 8–9

The fourth international Beeronomics Conference will be held in Seattle on Sept. 8–9, focuses on the economics of beer and brewing around the world.

The [Cider Symposium](#) on Sept. 9, is “a forum to exchange ideas and for people to learn more about cider, growing cider apples and how the economics of the industry works.” It is part of the larger Beeronomics Conference at the Sheraton Seattle Hotel.

[Read More](#)

[CONTACT](#) [DIRECTORY](#) [LOCATIONS](#)

ABOUT

[Executive Leadership](#)
[CAHNRS Administration](#)
[Locations](#)
[Departments](#)
[Latest News](#)
[Learn About](#)
[CAHNRS](#) ▶

ACADEMICS

[Degrees](#)
[Graduate Studies](#)
[Scholarships](#)
[Internships](#)
[Careers & Clubs](#)
[Visit Academics](#) ▶

RESEARCH

[Centers & Facilities](#)
[Grant Resources](#)
[Intellectual Property](#)
[Weekly Published Research](#)
[Safety](#)
[Visit Research](#) ▶

EXTENSION

[About Extension Programs](#)
[Publications](#)
[Locations](#)
[Impacts](#)
[Visit Extension](#) ▶

ALUMNI

[Where to Give](#)
[Ways to Give](#)
[Scholarship](#)
[Donor Profiles](#)
[ReConnect](#)
[Magazine](#)
[Connections](#)
[Magazine](#)
[Archive](#)
[Visit Alumni](#) ▶

FACULTY & STAFF

[Quick Links](#)
[Business Services](#)
[Budget & Finance Unit](#)
[Civil Rights](#)
[Compliance](#)
[Strategic Planning](#)
[Visit Faculty & Staff](#)

