

Vetgate: a quality evaluated gateway to networked resources in animal health

3ICAHIS 4 July 2000, London

Tom Roper : t.roper@rcvs.org.uk

Today's presentation

- Why Vetgate?
- Some history
- The current structure
- How it will all work
- The future

Why Vetgate?

- Concerns about quality
 - Sheer volume of information
 - Ephemeral nature of much information
 - Ease of self-publishing
 - the personal home page phenomenon
 - Lack of peer review or editorial and refereeing processes

Why Vetgate? (2)

- Concerns about popular search tools
 - poor quality metadata
 - most are indiscriminate, quality is not an issue
 - output lacks context
 - it's easy to find too many hits

In principio erat OMNI

- <http://omni.ac.uk>
- E-lib programme: proposal in 1994
- Launched in 1996
- “a gateway to Internet resources in medicine, biomedicine, allied health, health management and related topics”

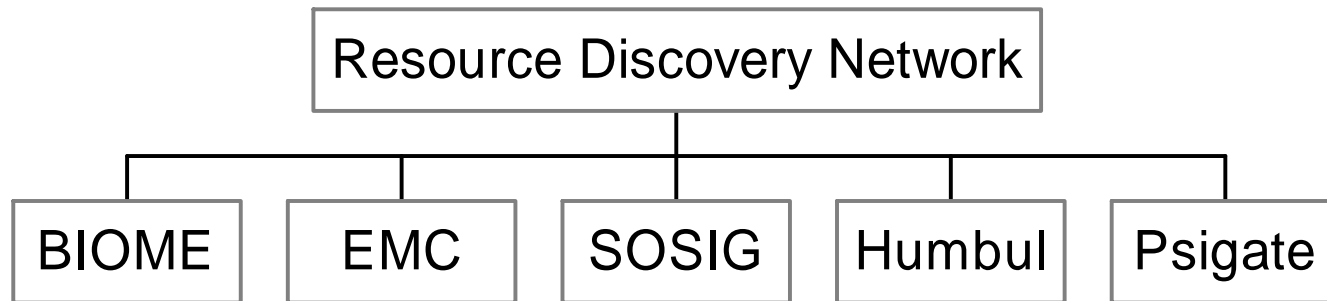
Le vice anglais

- Acronym soup:
 - OMNI, DNER, RDN, NLPN, JISC, EMC, EEVL, HUMBUL, SOSIG.....

From OMNI to BIOME

- How can we extend the model of the gateway?
- JISC Committee for Electronic Information
 - development programme “translating successful projects into services, large scale resource discovery, hybrid libraries and digital preservation.”
- 1998 - call for proposals
- Resulted in the creation of the RDN (<http://www.rdn.ac.uk/>)

The structure



The structure (2)

- AgriFor
- BioResearch
- Natural Selection
- OMNI
- Vetgate

The gateways

- Gateways
 - catalogues of descriptions of quality Internet resources
 - focused on particular subject areas
 - added services
- Quality control
 - selected using clear, published guidelines

OMNI, BIOME and quality

- Resource evaluation:
 - <http://omni.ac.uk/agec/>
- Quality criteria:
 - <http://omni.ac.uk/agec/evalguid.html>

BIOME partners

- Natural History Museum
- CTI Biology
- Royal College of Veterinary Surgeons
- Oxford University
- Reading University
- BRIL - the BBSRC Research Institutes Librarians organisation
- The Royal Free Hospital
- University of Nottingham

What will BIOME do? (1)

- catalogues of internet resource descriptions that can be searched or browsed individually or across the five subject gateways
- hosting of databases, collections of data and mirrors of appropriate resources
- outreach and training activities to support the use of BIOME and the Resource Discovery Network
- training

What will BIOME do? (2)

- BIOME web site
 - cross-browse all gateways by classification scheme
 - cross-search all gateways
 - link to other Hubs, RDN and BIOME gateways
- Gateways - individual identities
 - browse using classification scheme, thesaurus
 - search by free text
 - categories such as mailing lists, journals etc.
 - added services
 - browsing by species, dental image database etc.

Vetgate Partners

- Royal College of Veterinary Surgeons (marketing and promotion)
- Royal Veterinary College (content providers)
- University of Nottingham (content providers, technical and administrative support, project management)

Vetgate audience

- Veterinary surgeons, lecturers and students
- Veterinary nurses and other para-veterinary professionals
- Other people involved in animal health
- Animal health researchers and scientists
- Producers and suppliers of veterinary goods, services and information

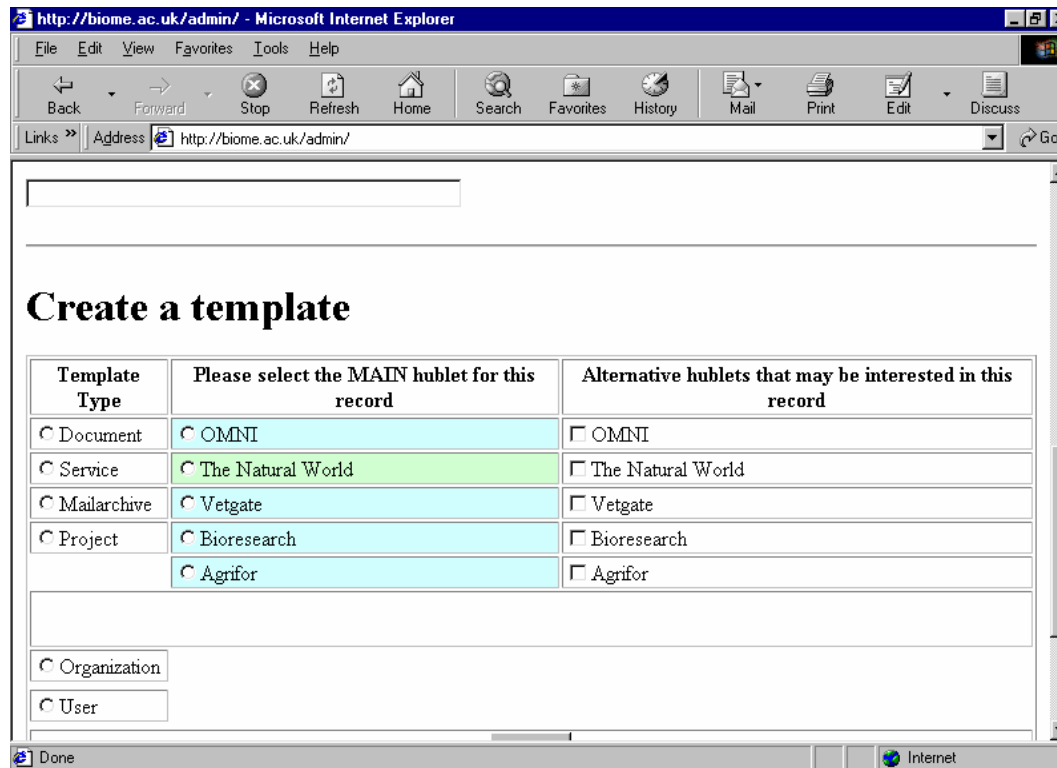
Finding and organising new resources

- Finding:
 - Scout Report:
 - <http://scout.cs.wisc.edu/>
 - Internet Resources Newsletter:
 - <http://www.hw.ac.uk/libWWW/irn/irn.html>
- Organising: NML/LC, CABI Thesaurus

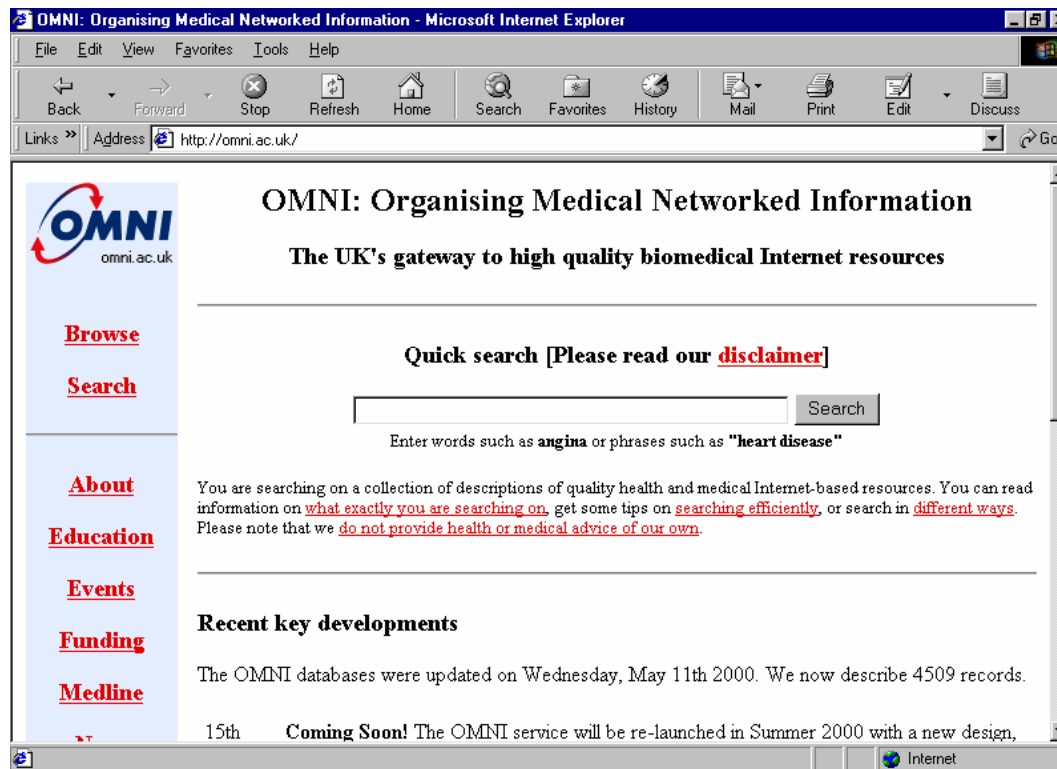
Guidelines

- What goes in, who is it aimed at?
 - BIOME Collection Development Policy
 - <http://biome.ac.uk/guidelines/collection/>
- Evaluating the resources
 - BIOME Evaluation Guidelines
 - <http://biome.ac.uk/guidelines/eval/>
- Cataloguing the resource
 - BIOME Cataloguing Guidelines
 - <http://biome.ac.uk/guidelines/cat>

The interface for cataloguers



The old interface for users



Vetgate training

- One workshop already held (jointly organised by OMNI, RCVS and RVC)
- Next workshop in September, with AHIS (UK & Ireland)

Progress so far

- > 6,000 resources catalogued across the gateways
- Official launch in November at the Royal Society (unofficially it will go live well before that)

Future

- Cross-sectorality:
 - Peoples Network
<http://www.peoplesnetwork.gov.uk/>
 - National Electronic Library for Health:
<http://www.nelh.nhs.uk>
- Sustainability